



# HODSONS

PCM

**£650 PCM**

**Beech House**

, WF10 5QN

## PROPERTY SUMMARY

A one bedroom modern second floor apartment in a gated community. Close to local amenities. In brief comprises: Lounge/kitchen, one bedroom, shower room. Allocated parking for one vehicle.

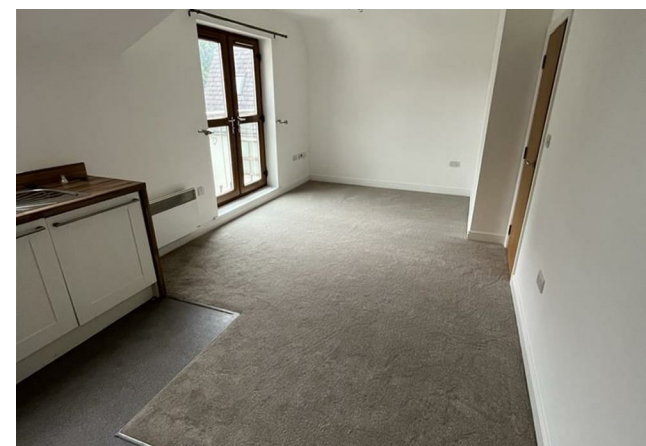
1



1



1





**LOCAL AUTHORITY**

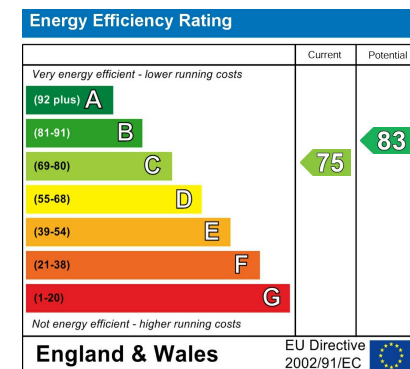
Wakefield Metropolitan District council

**TENURE****COUNCIL TAX BAND**

A

**VIEWINGS**

By prior appointment only



Agents Note: Whilst every care has been taken to prepare these particulars, they are for guidance purposes only. All measurements are approximate and are for general guidance purposes only and whilst every care has been taken to ensure their accuracy, they should not be relied upon and potential buyers/tenants are advised to recheck the measurements

**OFFICE ADDRESS**

37-39 George Street  
Wakefield  
West Yorkshire  
WF1 1LX

**OFFICE DETAILS**

01924 200544  
wakefield@hodsonsproperty.co.uk  
www.hodsonsproperty.co.uk